

Reasoning Mega Quiz for RRB NTPC (Solutions)

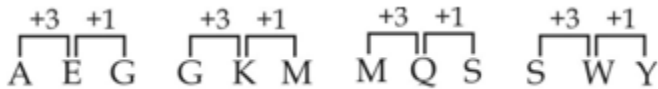
S1. Ans.(a)

S2. Ans.(a)

Sol. $38 \div 2 \times 6 - 19 + 35 = 130$

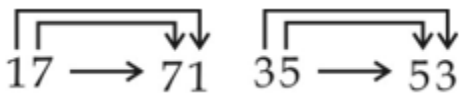
S3. Ans.(a)

Sol.



S4. Ans.(d)

Sol.



S5. Ans.(d)

Sol. Joule, Watt are SI units of energy, resistance and Power respectively but Magnetic field is a force field that is created by moving electric charges and magnetic dipoles.

S6. Ans.(d)

Sol.



S7. Ans.(c)

Sol.

$2 + 1 + 9 + 7 = 19$

$3 + 3 + 7 + 5 = 18$

$4 + 0 + 9 + 9 = 22$

$2 + 7 + 4 + 4 = 17$

S8. Ans.(b)

Sol.

$7 + 9 + 4 = 20$

$5 + 7 + 6 = 18$

$6 + 6 + 8 = 20$

$9 + 9 + 2 = 20$

Complete Preparation for
RAILWAY Exams

**RAILWAY
EXTREME**

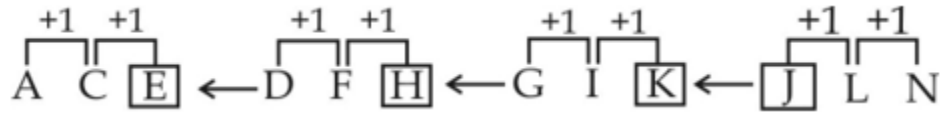
Video Courses, Test Series,
eBooks

S9. Ans.(a)

Sol. Padma shri, Padma Bhushan, Padma Vibhushan, Bharat Ratna are Civilian awards.

S10. Ans.(a)

Sol.



S11. Ans.(d)

Sol.

$$90 + 70 + 60 = 220 \text{ kg}$$

$$90 + 70 + 60 + 80 = 300 \text{ kg}$$

$$80 + 90 + 60 = 230 \text{ kg}$$

S12. Ans.(c)

Sol. There is no 'E' in the given word.

S13. Ans.(b)

Sol.

-3 series

S14. Ans.(b)

Sol.

$$12 \times 6 \div 5 + 4$$

$$= 12 \div 6 - 5 \times 4$$

$$= 2 - 20$$

$$= -18$$

S15. Ans.(c)

Sol.

$$(7 + 5) - (2 + 6) = 4$$

$$(6 + 9) - (5 + 3) = 7$$

$$(8 + 2) - (4 + 6) = 0$$

S16. Ans.(a)

Sol.

Car runs on road

Ship moves on Water.

S17. Ans.(a)

Sol.

$$5^3 - 1 = 124$$

$$6^3 - 1 = 215$$

S18. Ans.(d)

Sol. Pair of opposite letters. Sequence, except CWDX.

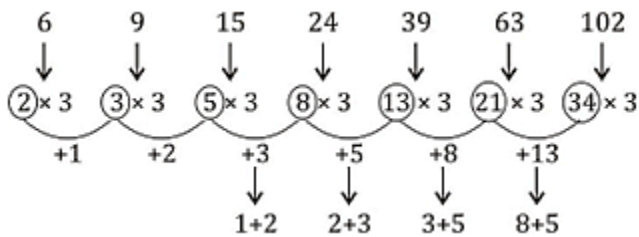
S19. Ans.(b)

Sol.

- 3. Pastel
- 5. Pebble
- 4. Postal
- 1. Pragmatic
- 2. Protect

S20. Ans.(c)

Sol.



S21. Ans.(c)

Sol. Ramanujan → Mathematician

Sushruta → Physician

S22. Ans.(b)

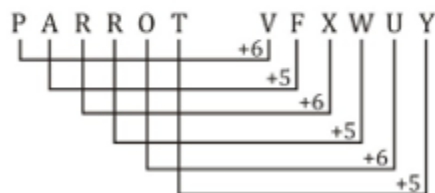
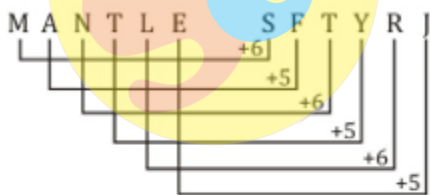
Sol.

$5 + 4 + 5 = 14 = 14^2 = 196$

$1 + 7 + 3 = 11 = 11^2 = 121$

S23. Ans.(a)

Sol.



S24. Ans.(d)

Sol. Equator does not pass through Venezuela.

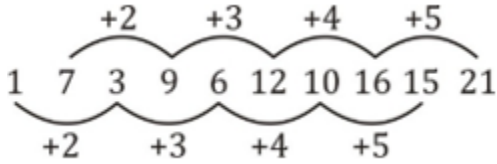
SSCadda.com

S25. Ans.(c)

Sol. +2, +3, +4 except (TVYB)

S26. Ans.(d)

Sol.



S27. Ans.(c)

Sol.

14th September → Tuesday

No. of Days after 14th sept to 17th oct = 33 days

∴ No. of odd days = $\frac{33}{7} = 5$ odd days

∴ 17th oct → Tuesday + 5 = Sunday

S28. Ans.(b)

Sol.

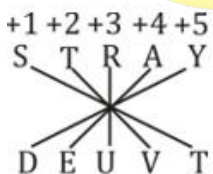
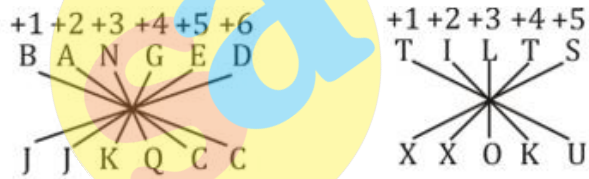
R (18) = D (4) + N (14)

X (24) = V (22) + B (2)

R (18) = L (12) + F (6)

S29. Ans.(d)

Sol.



S30. Ans.(a)

Sol. MN / MNO / MNOP / MNOPQ

SSCadda.com

