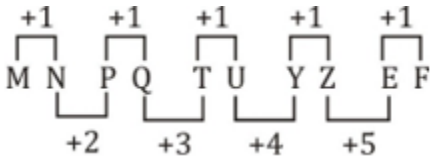


Reasoning Mega Quiz for SSC CHSL (Solutions)

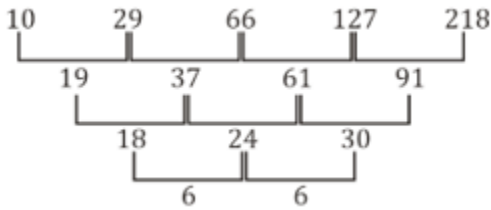
S1. Ans.(c)

Sol.



S2. Ans.(c)

Sol.



S3. Ans.(a)

S4. Ans.(b)

Sol.

Let x_6 be the temperature on sixth day

$$\frac{201 + x_6}{6} = 41$$

$$201 + x_6 = 41 \times 6$$

$$x_6 = 246 - 201$$

$$x_6 = 45$$

S5. Ans.(c)

Sol.

Umbrella → Unicorn → Uniform → Unitary

SSCadda.com

Complete Preparation for
SSC Exams

SSC
EXTREME

Video Courses, Test Series,
eBooks

S6. Ans.(c)

Sol.

A	R	M	S	L	I	R
5	4	6	7	1	2	4

S M A L L
↓ ↓ ↓ ↓ ↓
7 6 5 1 1

S7. Ans.(c)

Sol.

Column 1: $(15 + 6) \times 4 \rightarrow 84$
Column 2: $(30 + 8) \times 4 \rightarrow 152$
Column 3: $(20 + 5) \times 4 \rightarrow 100$

S8. Ans.(b)

Sol.

$$505 \div 5 - 4 + 20 \times 5 = 197$$

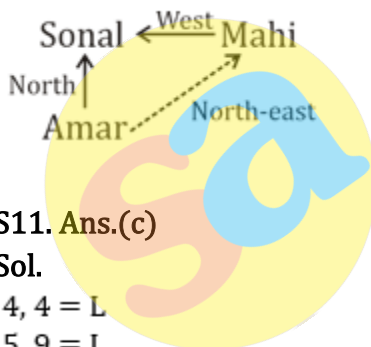
S9. Ans.(b)

Sol.

M N N O / M N N O / M N N O

S10. Ans.(c)

Sol.



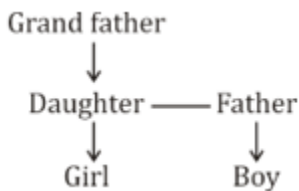
S11. Ans.(c)

Sol.

4, 4 = L
5, 9 = I
8, 8 = 0
2, 0 = N

S12. Ans.(d)

Sol.



S13. Ans.(a)

S14. Ans.(b)

S15. Ans.(a)

S16. Ans.(b)

Sol.

$$7, 7 = G$$

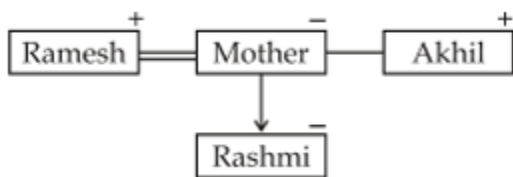
$$2, 2 = A$$

$$6, 6 = I$$

$$4, 3 = N$$

S17. Ans.(a)

Sol.



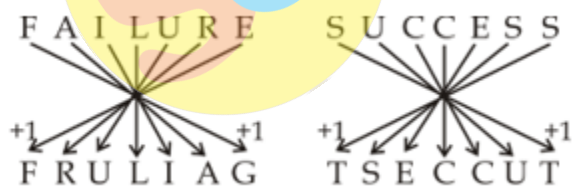
S18. Ans.(d)

S19. Ans.(b)

S20. Ans.(a)

S21. Ans.(a)

Sol.



S22. Ans.(a)

Sol.

$$\text{Column 1 : } (3)^3 + (2)^2 \rightarrow 31$$

$$\text{Column 2 : } (4)^3 + (7)^2 \rightarrow 113$$

$$\text{Column 3 : } (5)^3 + (6)^2 \rightarrow 161$$

TEST SERIES

Bilingual



SSC CGL 2019-20
PRIME

400+ TOTAL TESTS

Validity : 12 Months

S23. Ans.(b)

Sol.

$$154 \div 11 \times 6 + 6 - 27 = 63$$

S24. Ans.(c)

Sol.

str/rts/str

S25. Ans.(a)

S26. Ans.(b)

Sol.

$$8, 9 = S$$

$$4, 4 = A$$

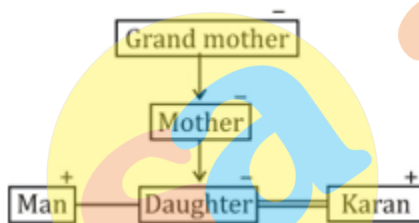
$$5, 7 = R$$

$$0, 4 = E$$

$$7, 8 = E$$

S27. Ans.(b)

Sol.



S28. Ans.(a)

S29. Ans.(b)

S30. Ans.(b)

6 Months Subscription

SSC CGL
TIER-II MAHA PACK

Test Series, Live Classes,
Video Course, Ebooks

Bilingual (With e-Books)