

Reasoning Mega Quiz for RRB NTPC

Q1. A series is given with one term missing. Select the correct alternative from the given ones that will complete the series.

AY, CW, EU, ?

- (a) GS
- (b) HS
- (c) GR
- (d) HR

Q2. A series is given with one term missing. Select the correct alternative from the given ones that will complete the series.

122, 197, 290, ?

- (a) 399
- (b) 400
- (c) 401
- (d) 402

Q3. In the following question, two statements are given each followed by two conclusions I and II. You have to consider the statements to be true even if they seem to be at variance from commonly known facts. You have to decide which of the given conclusions, if any, follows from the given statements.

Statement:

(I) India's GDP continues to grow at one of the reasonable rates but job creation is not picking up the similar pace.

(II) Every year over 20 million young Indians join the workforce.

Conclusions:

(I) Population increase is more than the job creation rate.

(II) Supply basket is less and the demand basket for jobs is very high.

- (a) Only conclusion II follows
- (b) Conclusion I and II both follow
- (c) Neither I nor II follow
- (d) Only conclusion I follows

Q4. Five girls are sitting facing towards the north. Rekha is between Shalini and Neetu. Pooja is to the immediate right of Neetu and Shalini is to the immediate right of Neha. Who is sitting in the middle?

- (a) Shalini
- (b) Neetu
- (c) Rekha
- (d) Pooja



12 Month Subscription



RAILWAYS
Useful for NTPC | Group D | ALP

TEST PACK

Q5. Arrange the given words in the sequence in which they occur in the dictionary.

- i. nature
 - ii. nest
 - iii. numeric
 - iv. news
- (a) iii, i, ii, iv
(b) iv, ii, iii, i
(c) i, ii, iv, iii
(d) i, ii, iii, iv

Q6. Select the odd word/letters/number/number pair from the given alternatives.

- (a) BGF
- (b) FDH
- (c) BAE
- (d) CDE

Q7. Select the odd word/letters/number/number pair from the given alternatives.

- (a) 2197
- (b) 3375
- (c) 4099
- (d) 2744

Q8. Select the odd word/letters/number/number pair from the given alternatives.

- (a) 794
- (b) 576
- (c) 668
- (d) 992

Q9. A series is given with one term missing. Select the correct alternative from the given ones that will complete the series.

Padma Shri, Padma Bhushan, Padma Vibhushan, ?

- (a) Bharat Ratna
- (b) Ashok Chakra
- (c) Sahitya Akademi Award
- (d) Arjuna Award

Q10. A series is given with one term missing. Select the correct alternative from the given ones that will complete the series.

C A E, F D H, I G K, ?

- (a) L J N
- (b) O M Q
- (c) K L M
- (d) P O N

Q11. A word is represented by only set of numbers as given in any one of the alternatives. The sets of numbers given in the alternatives are represented by two classes of alphabets as shown in the given two matrices. The columns and rows of Matrix-I are numbered from 0 to 4 and that of Matrix-II are numbered from 5 to 9. A letter from these matrices can be represented first by its row and next by its column, for example, 'N' can be represented by 21, 67 etc. and 'R' can be represented by 66, 57 etc. Similarly, you have to identify the set for the word 'HUNT'.

Matrix - I

आव्युह

	0	1	2	3	4
0	T	R	A	N	B
1	W	U	N	H	U
2	E	N	S	G	U
3	N	Y	P	U	M
4	H	T	U	F	A

Matrix - II

आव्युह

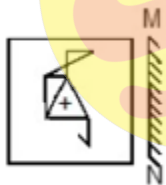
	5	6	7	8	9
5	T	A	R	I	H
6	X	R	N	W	B
7	C	S	Y	E	U
8	S	N	T	M	S
9	G	B	E	R	H

- (a) 40, 33, 03, 88
- (b) 99, 23, 56, 00
- (c) 59, 42, 12, 79
- (d) 13, 11, 30, 41

Q12. Introducing a girl, a man says, "She is the daughter of the daughter of my wife". How is man related to the girl?

- (a) Maternal uncle
- (b) Son
- (c) Maternal grandfather
- (d) Father

Q13. If a mirror is placed on the line MN, then which of the answer figures is the right image of the given figure?



(a)



(b)



6 Months Subscription

RRB NTPC

KA MAHA PACK

Test Series, Live Classes,
Video Course, eBooks

Bilingual

(c)



(d)

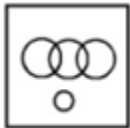


**Q14. Identify the diagram that best represents the relationship among the given classes.
Olympic games, Tennis, Wrestling, Ludo**

(a)



(b)



(c)



(d)



Q15. A piece of paper is folded and punched as shown below in the question figures. From the given answer figures, indicate how it will appear when opened.



(a)



(b)



(c)



(d)



Q16. Select the related word/letters/number from the given alternatives.

Agra : Yamuna :: Varanasi : ?

- (a) Damodar
- (b) Betwa
- (c) Ganga
- (d) Son

Q17. Select the related word/letters/number from the given alternatives.

IJ : PR :: ? : SU

- (a) IJ
- (b) LM
- (c) EF
- (d) LI

Q18. Select the related word/letters/number from the given alternatives.

CD : IP :: EB : ?

- (a) HI
- (b) KN
- (c) YA
- (d) XY

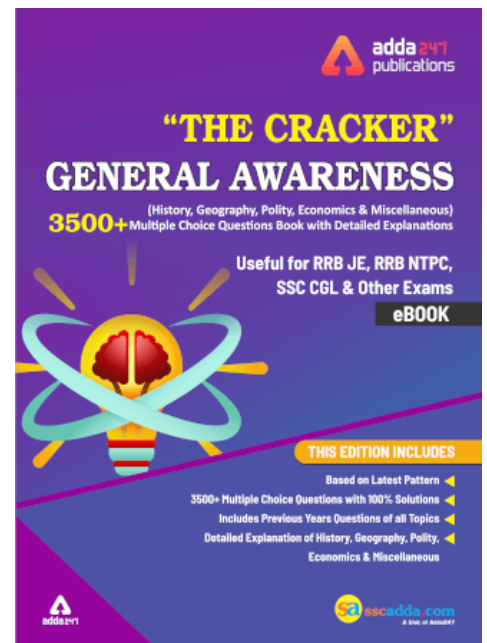
Q19. Select the related word/letters/number from the given alternatives.

12 : 72 :: 14 : ?

- (a) 98
- (b) 91
- (c) 42
- (d) 60

Q20. Find out the odd word/letters/number/number pair from the given alternatives.

- (a) Param Vir Chakra
- (b) Ashoka Chakra
- (c) Vir Chakra
- (d) Maha Vir Chakra



Q21. A series is given with one term missing. Choose the correct alternative from the given ones that will complete the series.

IB, QD, XH, DP, ?

- (a) KL
- (b) KI
- (c) GH
- (d) IF

Q22. A series is given with one term missing. Choose the correct alternative from the given ones that will complete the series.

13, 25, 49, 85, ?

- (a) 331
- (b) 132
- (c) 133
- (d) 381

Q23. In the following question, two statements are given each followed by two conclusions I and II. You have to consider the statements to be true even if they seem to be at variance from commonly known facts. You have to decide which of the given conclusions, if any, follows from the given statements.

Statements

- I.** All young scientists are open-minded.
- II.** No open-minded men are superstitious

Conclusion

- (I)** No scientist is superstitious.
- (II)** No young people are superstitious
- (a) Conclusion I follows
- (b) Conclusion II follows
- (c) Neither I nor II follows
- (d) Both I and II follows

Q24. Five friends are standing in a line. Nishu is taller than Riya but shorter than Pooja. Amrita is the shortest. Riya is shorter than Nishu but taller than Nikita.

Who is the second tallest?

- (a) Amrita
- (b) Pooja
- (c) Riya
- (d) Nishu

Q25. Arrange the given words in the sequence in which they occur in the dictionary.

- i.** Apparent
- ii.** Appointed
- iii.** Apostate
- iv.** Apparel

- (a) ii, i, iv, iii
- (b) iii, ii, iv, i
- (c) iii, iv, i, ii
- (d) iii, iv, ii, i

Q26. In a certain code language, "DELETE" is written as "#@^@%@" and "GRAM" is written as "!?*&". How is "TELEGRAM" written in that code language?

- (a) %@^@^?*&
- (b) %@^@!?!^&
- (c) %@*@!?!*&
- (d) %@^@!?!*&

Q27. In the following questions select the missing number from the given series.

99	31	91
15	17	18
1485	527	?

- (a) 1678
- (b) 2341
- (c) 1137
- (d) 1638

Q28. If "#" means "subtraction", "&" means "division", "@" means "addition" and "%" means "multiplication", then

$$315 \& 3 \# 9 @ 4 \% 6 = ?$$

- (a) 120
- (b) 190
- (c) 221
- (d) 420

Q29. Which set of letters when sequentially placed at the gaps in the given letter series shall complete it?

MN_NOM_OPM_OP_

- (a) MNNQ
- (b) MNOQ
- (c) MNPQ
- (d) MNOO

Q30. Navjot starts moving towards the west. After covering some distance, he turns left and then takes a right. Which direction is he facing now?

- (a) South
- (b) North
- (c) West
- (d) East