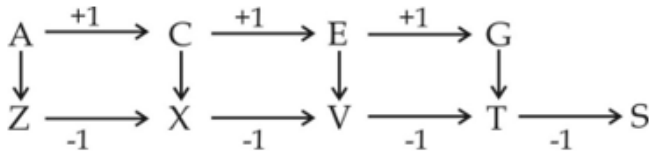


Reasoning Mega Quiz for RRB NTPC (Solutions)

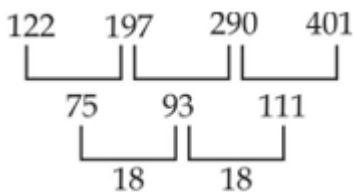
S1. Ans.(a)

Sol.



S2. Ans.(c)

Sol.



S3. Ans.(b)

S4. Ans.(c)

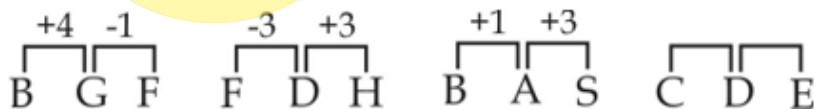
Sol. Neha Shalini Rekha Neetu Pooja

S5. Ans.(c)

Sol. Nature, Nest, News, Numeric

S6. Ans.(d)

Sol.



S7. Ans.(c)

Sol.

$$2 + 1 + 9 + 7 = 19$$

$$3 + 3 + 7 + 5 = 18$$

$$4 + 0 + 9 + 9 = 22$$

$$2 + 7 + 4 + 4 = 17$$

Complete Preparation for
RAILWAY Exams

RAILWAY
EXTREME

Video Courses, Test Series,
eBooks

S8. Ans.(b)

Sol.

$$7 + 9 + 4 = 20$$

$$5 + 7 + 6 = 18$$

$$6 + 6 + 8 = 20$$

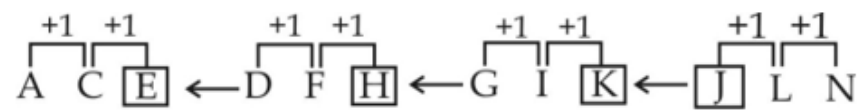
$$9 + 9 + 2 = 20$$

S9. Ans.(a)

Sol. Padma shri, Padma Bhushan, Padma Vibhushan, Bharat Ratna are Civilian awards.

S10. Ans.(a)

Sol.

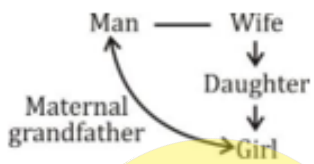


S11. Ans.(d)

Sol. 13, 11, 30, 41

S12. Ans.(c)

Sol.



S13. Ans.(d)

S14. Ans.(a)

S15. Ans.(c)

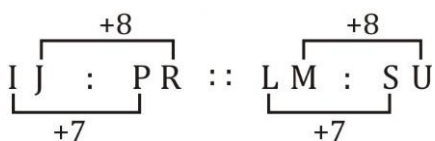
S16. Ans.(c)

Sol. Agra is situated on the bank of Yamuna

Varanasi is situated on the bank of Ganga.

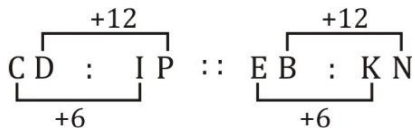
S17. Ans.(b)

Sol.



S18. Ans.(b)

Sol.



S19. Ans.(a)

Sol.

$$\frac{12}{2} \times 12 = 72$$

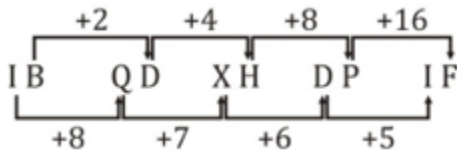
$$\frac{14}{2} \times 14 = 98$$

S20. Ans.(b)

Sol. Ashoka Chakra is present in Indian flag.

S21. Ans.(d)

Sol.



S22. Ans.(c)

Sol.

$$13 + 12 \times 1 = 25$$

$$25 + 12 \times 2 = 49$$

$$49 + 12 \times 3 = 85$$

$$85 + 12 \times 4 = 133$$

S23. Ans.(c)

Sol.



- I. ✗
- II. ✗

Neither I nor II follows.

S24. Ans.(d)

Sol.

Pooja > Nishu > Riya > Nikita > Amrita
Nishu is the second tallest.

BILINGUAL

RRB NTPC 4.0

Starts April 9, 2020

2 PM to 3 PM

SSCadda.com

S25. Ans.(c)

Sol.

iii. Apostate

iv. Apparel

i. Apparent

ii. Appointed

S26. Ans.(d)

Sol.

% @ ^ @ ! ? * &

S27. Ans.(d)

Sol.

$$99 \times 15 = 1485$$

$$31 \times 17 = 527$$

$$91 \times 18 = 1638$$

S28. Ans.(a)

Sol.

$$315 \& 3 \# 9 @ 4 \% 6$$

$$\Rightarrow 315 \div 3 - 9 + 4 \times 6$$

$$\Rightarrow 105 - 9 + 24$$

$$\Rightarrow 129 - 9$$

$$\Rightarrow 120$$

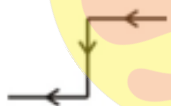
S29. Ans.(a)

Sol.

M N / M N O / M N O P / M N O P Q

S30. Ans.(c)

Sol.



He is facing towards the west.

