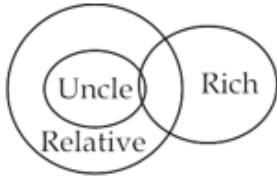


Reasoning Mega Quiz for RRB NTPC (Solutions)

S1. Ans.(d)

Sol.



S2. Ans.(d)

Sol.

Opposite side

1 → 5 → 6

1 → 3 → 2

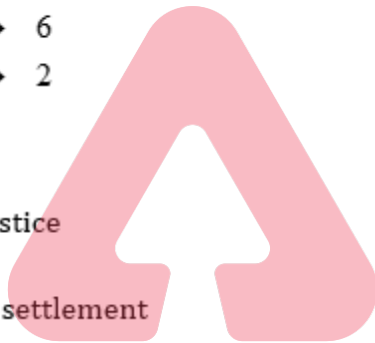
S3. Ans.(c)

Sol.

Lawyer → Justice

same as

Arbitrator → settlement

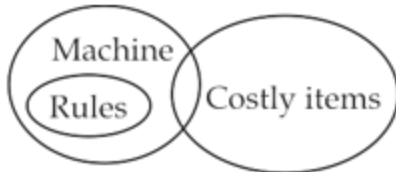


S4. Ans.(a)

Sol. Except for groundnut all are a type of seeds

S5. Ans.(c)

Sol.

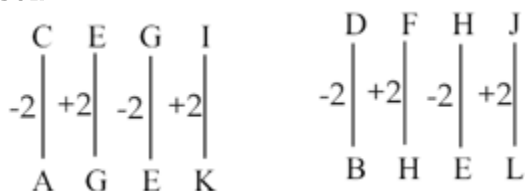


I. ×

II. ✓

S6. Ans.(c)

Sol.



12 Month Subscription



RAILWAYS

Useful for NTPC | Group D | ALP

TEST PACK

S7. Ans.(c)

Sol.

b c b a b b | b c b a b b | b c b a b b

S8. ans.(b)

Sol.

$$3 \times 2 + 1 = 7$$

$$7 \times 2 + 2 = 16$$

$$16 \times 2 + 3 = 35$$

$$35 \times 2 + 4 = 74$$

$$74 \times 2 + 5 = 153$$

S9. Ans.(d)

Sol.

V I C T O R Y
 ↙ ↘ ↙ ↘ ↙ ↘
 C I V S Y R O

-1↓

T R A I T O R
 ↙ ↘ ↙ ↘ ↙ ↘
 A R T H R O T

-1↓



S10. Ans.(a)

Sol.

$$\begin{array}{cc}
 36 & : & 84 \\
 \downarrow & & \downarrow \\
 12 \times \textcircled{3} & & 12 \times \textcircled{7}
 \end{array}$$

Similarly,

$$\begin{array}{cc}
 27 & : & 63 \\
 \downarrow & & \downarrow \\
 9 \times \textcircled{3} & & 9 \times \textcircled{7}
 \end{array}$$

S11. Ans.(b)

Sol.

DIG

$$4 + 9 + 7 = 20 + 5 = 25$$

CUT

$$3 + 21 + 20 = 44 + 5 = 49$$

Similarly,

KICK

$$11 + 9 + 3 + 11 = 34 + 5 = 39$$

S12. Ans.(d)

S13. ans.(d)

S14. Ans.(d)

S15. Ans.(c)

Sol.

(9, 35, 16)

$$\begin{array}{cc} \downarrow & \downarrow \\ 3^2 & 4^2 \end{array}$$

Similarly, for option (c)

(36, 55, 25)

$$\begin{array}{cc} \downarrow & \downarrow \\ 6^2 & 5^2 \end{array}$$

$(3 + 4) \times 5 = 35$

same as $(6 + 5) \times 5 = 55$

S16. Ans.(d)

Sol.

$(3, 24, 4) \rightarrow 3 \times 4 \times 2 = 24$

similarly, option (d)

$(4, 72, 9) \rightarrow 4 \times 9 \times 2 = 72$

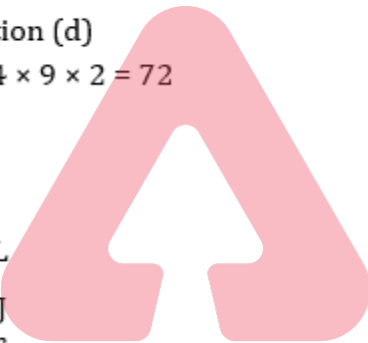
S17. Ans.(d)

Sol.

$C \xrightarrow{+3} F \xrightarrow{+3} I \xrightarrow{+3} L$

$G \xrightarrow{+1} H \xrightarrow{+1} I \xrightarrow{+1} J$

$M \xrightarrow{+2} O \xrightarrow{+2} Q \xrightarrow{+2} S$

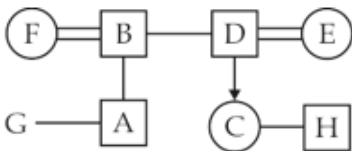


S18. Ans(c)

Sol. Except 254, all are multiple of 7.

S19. Ans.(a)

Sol.



so, H is the nephew of F.

S20. Ans.(d)

Sol.



BILINGUAL

RRB NTPC 4.0

Starts April 9, 2020

2 PM to 3 PM

S21. Ans.(c)

Sol.

Except (c) all follow $1^{st} \times 3 + 2$ Pattern.

S22. Ans.(b)

Sol.

RIVER → ERVRI



Inter change 1st two letter with last two latter.

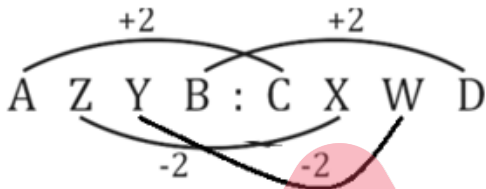
TRAIN → INATR

S23. Ans.(d)

Sol. All three use Raw material except teacher.

S24. Ans.(a)

Sol.



So +2, -2, -2, +2 series.

S25. Ans.(b)

S26. Ans.(c)

Sol. SITA, wife of RAM

UTTARA, wife of ABHIMANYU.

S27. Ans.(c)

Sol.

$$4 \times 8 - 16 \div 4 + 6 \div 3 + 2$$

$$32 - 4 + 2 + 2 = 32$$

S28. Ans.(c)

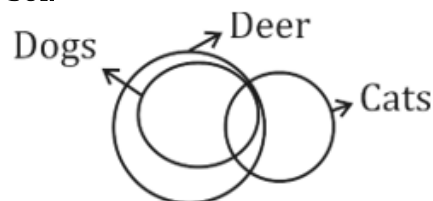
Sol.

All follow $(1^{st})^3 + 1$

Except (c)

S29. Ans.(a)

Sol.



S30. Ans.(d)

