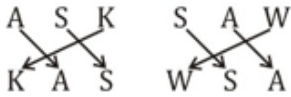


Reasoning Mega Quiz for SSC CHSL (Solutions)

S1. Ans.(d)

Sol.



S2. Ans.(a)

Sol.

$$\frac{36}{3} = \frac{12}{1} \quad \therefore \frac{108}{9} = \frac{12}{1}$$

S3. Ans.(b)

Sol. Except END others have two sets of vowels.

S4. Ans.(b)

Sol. Here

$$2 \times 3 = 6$$

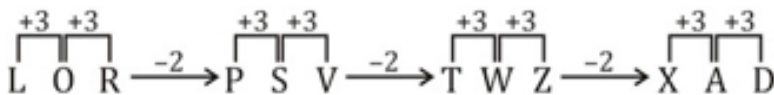
$$2 \times 4 = 8$$

$$1 \times 7 = 7$$



S5. Ans.(b)

Sol.



S6. Ans.(b)

Sol. Meaningful order

3. Requirements analysis



2. Conceptual Modelling



4. Logical Modelling



6. Schema Refinement



5. Physical Model



1. Implementation

TEST SERIES

Bilingual



SSC CGL TIER-II

PRIME

59 Total Tests | eBooks

S7. Ans.(d)

S8. Ans.(b)

Sol. First is name of novel, second is author of novel.

S9. Ans.(d)

Sol.

L K F E
↓ ↓ :: ↓ ↓
O P U V

S10. Ans.(d)

Sol. Except Bhubaneshwar other three are among major ports of India.

S11. Ans.(c)

Sol.

Letter	D	E	L	H	I	C	A	U	T
Code	7	3	5	4	1	8	2	9	6

The code of CALICUT is 8251896.

S12. Ans.(c)

Sol. In all other groups, the first number is obtained by adding 2 to the product of the second and the third numbers.

S13. Ans.(c)

Sol. All except Billiards are outdoor games.

S14. Ans.(a)

Sol. The first, third and fifth letters of the first group are each moved one step forward while the second and fourth letters are each moved one step backward to obtain the corresponding letters of the second group.

S15. Ans.(a)

Sol.

The correct sequence is $5^2, 7^2, 9^2, 11^2, 13^2, 15^2$.

So, 36 is wrong.

S16. Ans.(c)

Sol.

Original number	5 2 9 4 6 8 1 7
3	
Number formed by arranging	1 2 3 4 5 6 7 8
9	
digits in ascending order	

Clearly, the positions of 2 and 4 remain unaltered.

S17. Ans.(a)

Sol. Woman's mother-in-law's only son implies woman's husband.

Now, the brother of the daughter of woman's husband implies woman's son.

S18. Ans.(d)

Sol.

'Tree is very beautiful' -> ka na da ta(i)

'This is strong tree' -> na pa sa ka ... (ii)

∴ is ⇒ na/ka

tree ⇒ na/ka

Clearly,

Code for 'beautiful' cannot be found.

S19. Ans.(d)

Sol.

From option (d),

$$30 \div 5 + 4 \times 10 - 15$$

$$= 6 + 40 - 15$$

$$= 46 - 15 = 31 \text{ (True)}$$

S20. Ans.(b)

Sol.

$$14 \times 3 = 42 - 3 = 39$$

$$\text{Similarly, } 15 \times 3 = 45 - 3 = 42$$

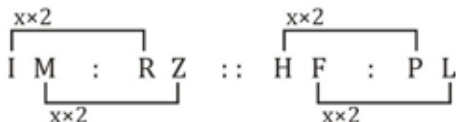
S21. Ans.(b)

Sol.

First is name of the Dam and second is the river.

S22. Ans.(c)

Sol.



S23. Ans.(c)

Sol. Except Dhyan Chand other three are cricket players.

S24. Ans.(a)

Sol.

Row:1	Row:3	Row:3
$\sqrt{25} \times \sqrt{144} = 60$	$\sqrt{81} \times \sqrt{225} = 135$	$\sqrt{49} \times \sqrt{289} = 119$



12 Months Subscription

SSC

MAHA PACK

Live Class, Video Course,
Test Series, eBooks

Bilingual (with eBooks)

S25. Ans.(a)

Sol. cdefcdefcdef

S26. Ans.(c)

Sol.

7, 6 = H

7, 8 = I

1, 0 = G

4, 4 = H

5, 7 = L

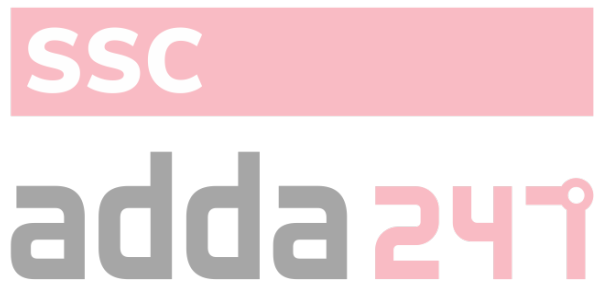
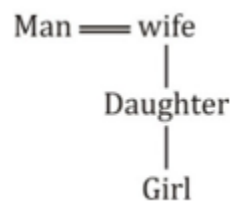
3, 2 = Y

S27. Ans.(d)

S28. Ans.(b)

S29. Ans.(c)

Sol.



S30. Ans.(a)

12 Months Subscription



SSC

Useful for CGL, CHSL & others

TEST PACK